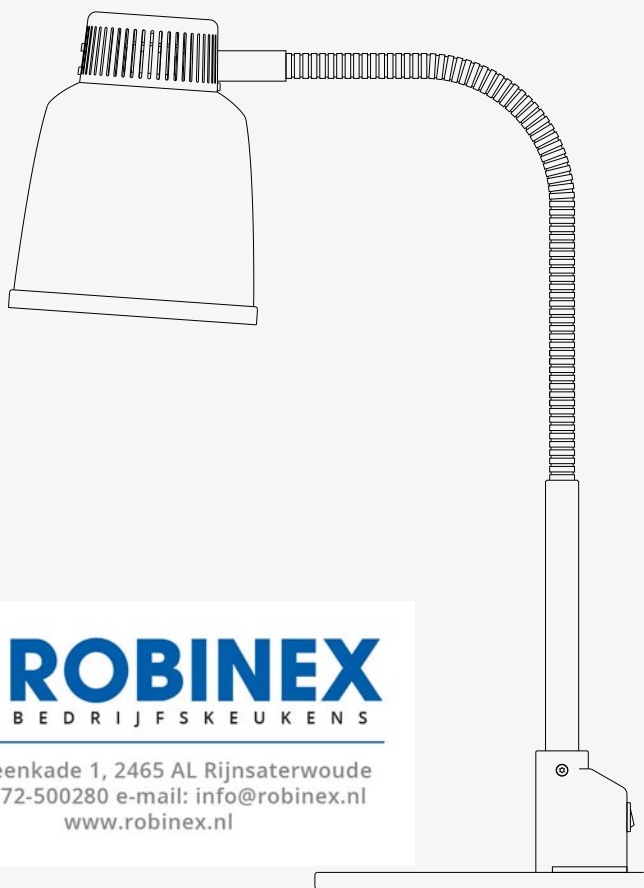


Instruktionsmanual
Stayhot Focus Värmelampa
Fristående Modell LPF

SE

*Instruction Manual
Stayhot Focus Heat Lamp
Freestanding Model LPF*

EN



 **ROBINEX**
BEDRIJFSKEUKENS

H.L.Breenkade 1, 2465 AL Rijnsaterwoude
Tel: 0172-500280 e-mail: info@robinex.nl
www.robinex.nl



FOCUS

MADE BY STAYHOT

www.stayhot.se

Instruction Manual
Stayhot Focus Heat Lamp
Freestanding Model LPF
English

Thank you for your purchase of our Stayhot Focus heat lamp!

In this manual you will find installation instructions, wiring diagrams, safety guidelines and other valuable information. We hope you will get a lot of use from this product for many years to come.

If you ever need any assistance with your lamp or have any questions, please don't hesitate to get in touch.

Stayhot AB		Instruction Manual 210316 V4.0
Telefon	+46 8 35 79 15	Subject to technical modifications at any time and without notice.
Email	info@stayhot.se	
Web	www.stayhot.se	
Adress	Knistavägen 1B 191 62 Sollentuna Sweden	

This Stayhot Focus heat lamp was manufactured in our Swedish factory. With full control over materials, suppliers and recycling, we only settle for the highest quality.

Each lamp assembled is individually tested and carefully inspected by our production team before being packed and shipped out to you.

Table of Contents

1	Safety Information	16
2	General Information	18
3	Installation	19
4	Use	20



1. Safety Information

Read the safety instructions carefully before installation and use of the product. The manufacturer will not take responsibility for injuries or damage as a result of incorrect installation or use. Save this instruction manual for future use.

1.1 General

The product should not be used by children of less than 15 years old, people with reduced physical, sensory or mental capabilities or people lacking experience and knowledge. The product should be placed out of reach of pets and children of less than 8 years old. The product should not be used as a toy.

1.2 Installation



Warning! Risk of injuries, burns, fire and electrical shock.

- The power source must conform to the product's specified label data.
- The product should be connected to a socket with earthing connection.
- Do not install or use a damaged or in other ways faulty product.
- Remove all packaging material before installation.
- The product should be preceded by an all pole electrical switch.
- The product should not be installed in an area where it may come in direct contact with water.



Warning! If this radiant heater is positioned adjacent to other areas or appliances, it is recommended that, within the range of the radiation, these areas or appliances be made of non-combustible material, otherwise, they shall be clad with a noncombustible heat-insulating material, and attention is to be paid to fire prevention regulations.

1.3 Use



Warning! Risk of injuries, burns, fire and electrical shock.



Warning! Hot Surface

The surface of the product becomes hot during use and should be handled with caution. Any repairs or changes to the product may only be made by an approved service technician in cooperation with the manufacturer.

In case of service or replacement of components, disconnect the product from the power supply.



Warning! In case of damage to the product or power cord, it should immediately be disconnected from the power supply and be taken out of use.



Warning! The product contains electrical connections and should not come into contact with water.

Protect this appliance from moisture, water spray and rain. Do not immerse the product in water or other fluids. When cleaning, disconnect the product from the power supply and ensure that it has cooled from the last use. Do not use jet water to clean this product. Follow the instructions for maintenance and cleaning in Chapter 2, "General Information".

An installed product should not be covered.

1.4 Waste Disposal

Cut power cord close to the product before disposal.

Dispose of the product according to the applicable regulations and instructions at the place where the product is disposed of.

2. General Information

To optimize the use of your Stayhot heat lamp, please read these instructions carefully and keep the manual for future use.

The heat lamp is designed for use with a 250W, E27 infrared heat lamp (included).

Technical Specifications

Voltage	230 V
Power	250 W
Frequency	50 Hz



Important! This appliance is for indoor use only.

Operational Tips

Do not operate the heat lamp with wet hands. Always wipe liquid and food splashes off lamp and shade as soon as possible.



Warning! The product becomes hot during use.

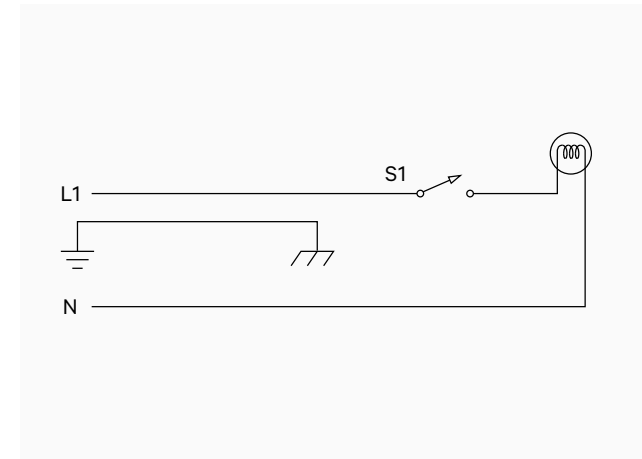
Maintenance & Repairs

Turn off the power by removing the plug from the socket before cleaning. Avoid abrasive detergents since it may damage the surface of the heat lamp.

3. Installation

The heat lamp is equipped with a 230V electrical plug and should always be connected to a socket, with earthing connection, of type F or type E.

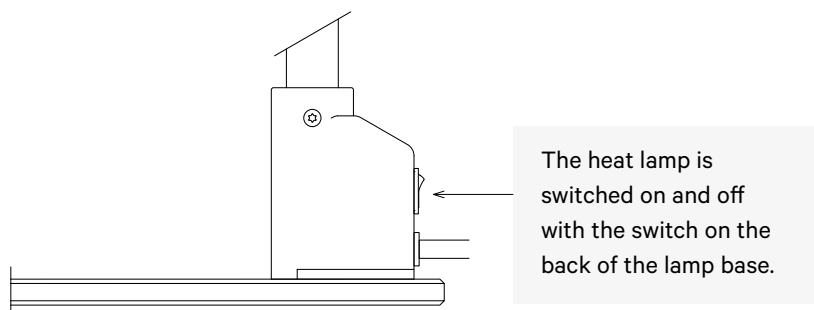
Wiring Diagram



4. Use

The heat lamp should only be used maintain the temperature of hot food and is not meant for cooking. Stayhot takes no responsibility for use in other ways than is described in this manual.

Warning! Do not place the heat lamp in a location where it may come into contact with water.



Mounting Instructions

The heat lamp has three different mounting options, mounting on lamp base, mounting on table clamp, fixed mounting on existing surface.

Lamp Base

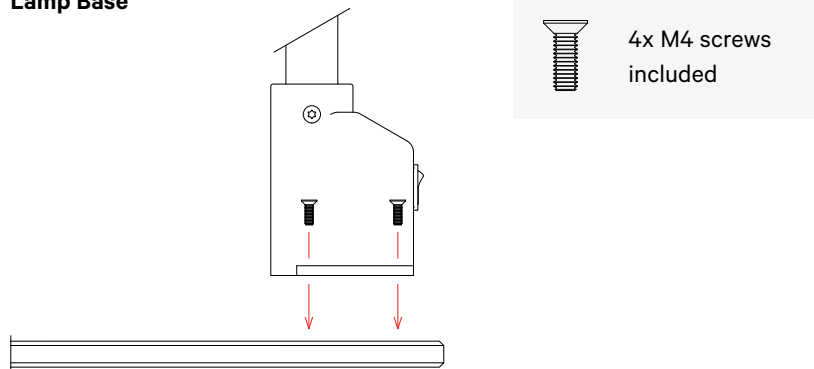
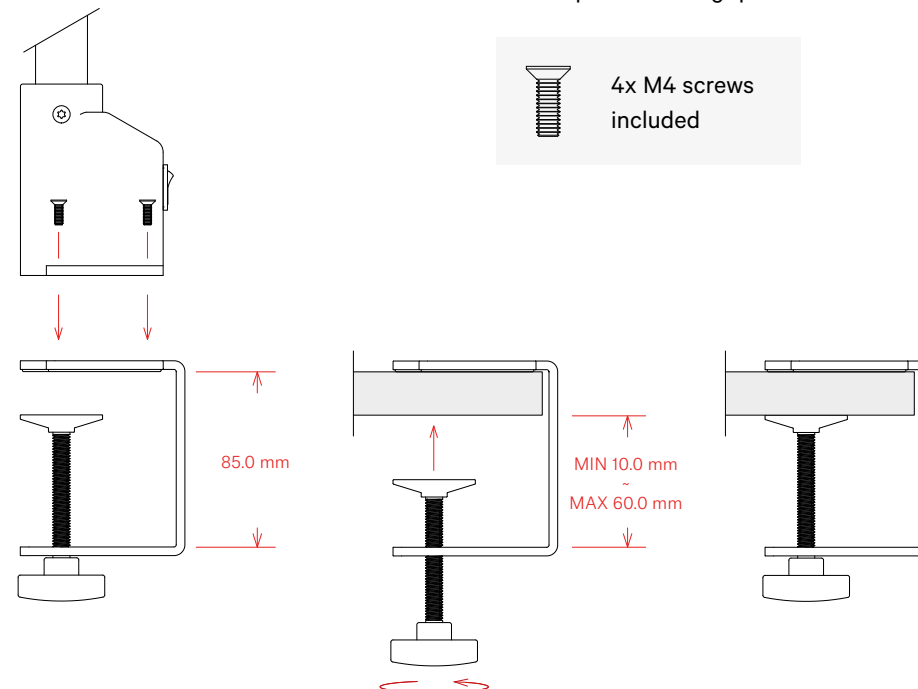
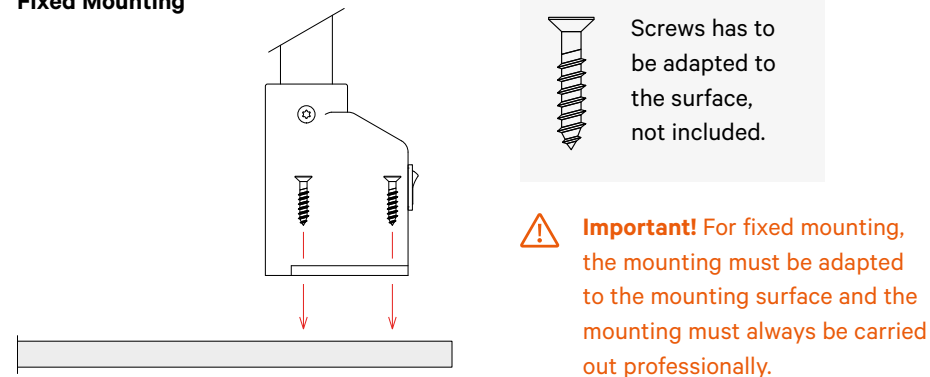


Table Clamp

To mount the table clamp on the table top, screw the knob clockwise until it grips the table top with a firm grip.



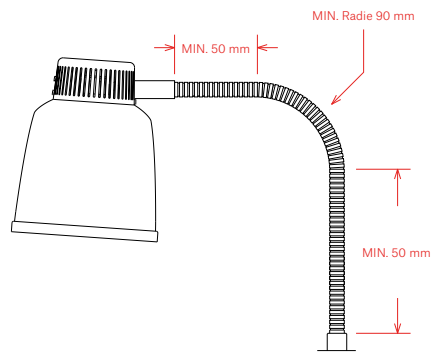
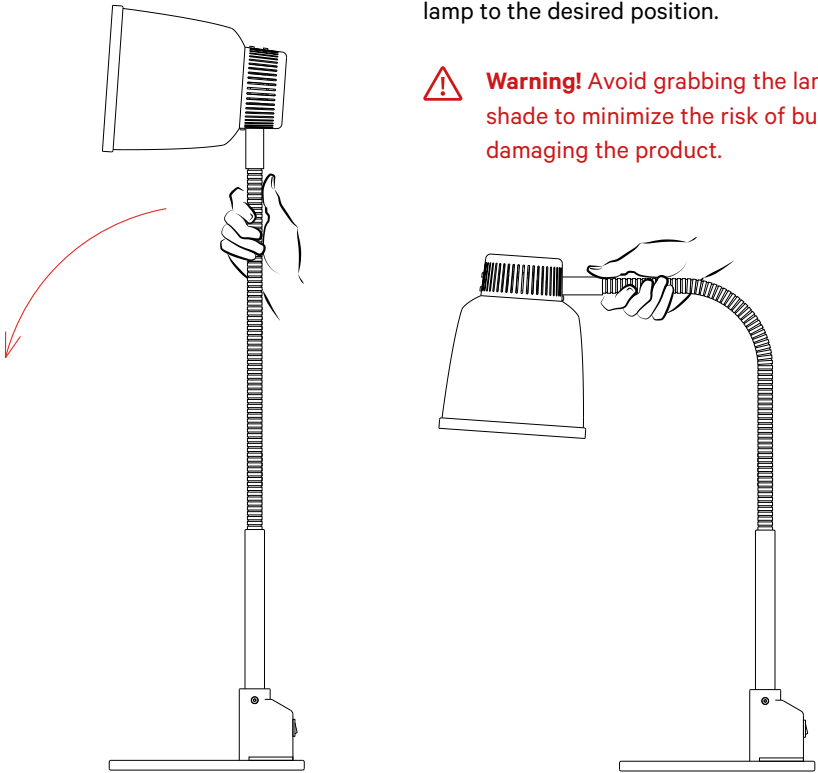
Fixed Mounting



Adjusting The Position Of The Heat Lamp

Adjust the position of the heat lamp by grabbing the flexible arm and turning the lamp to the desired position.

Warning! Avoid grabbing the lamp shade to minimize the risk of burns and damaging the product.



Important! The minimum allowable bending radius of the adjustable arm of the heat lamp is 90 mm.

Important! Always leave 50 mm between the bend and the flexible arm end points.

Heat Zone

Recommended distance between heat source and heated surface.

